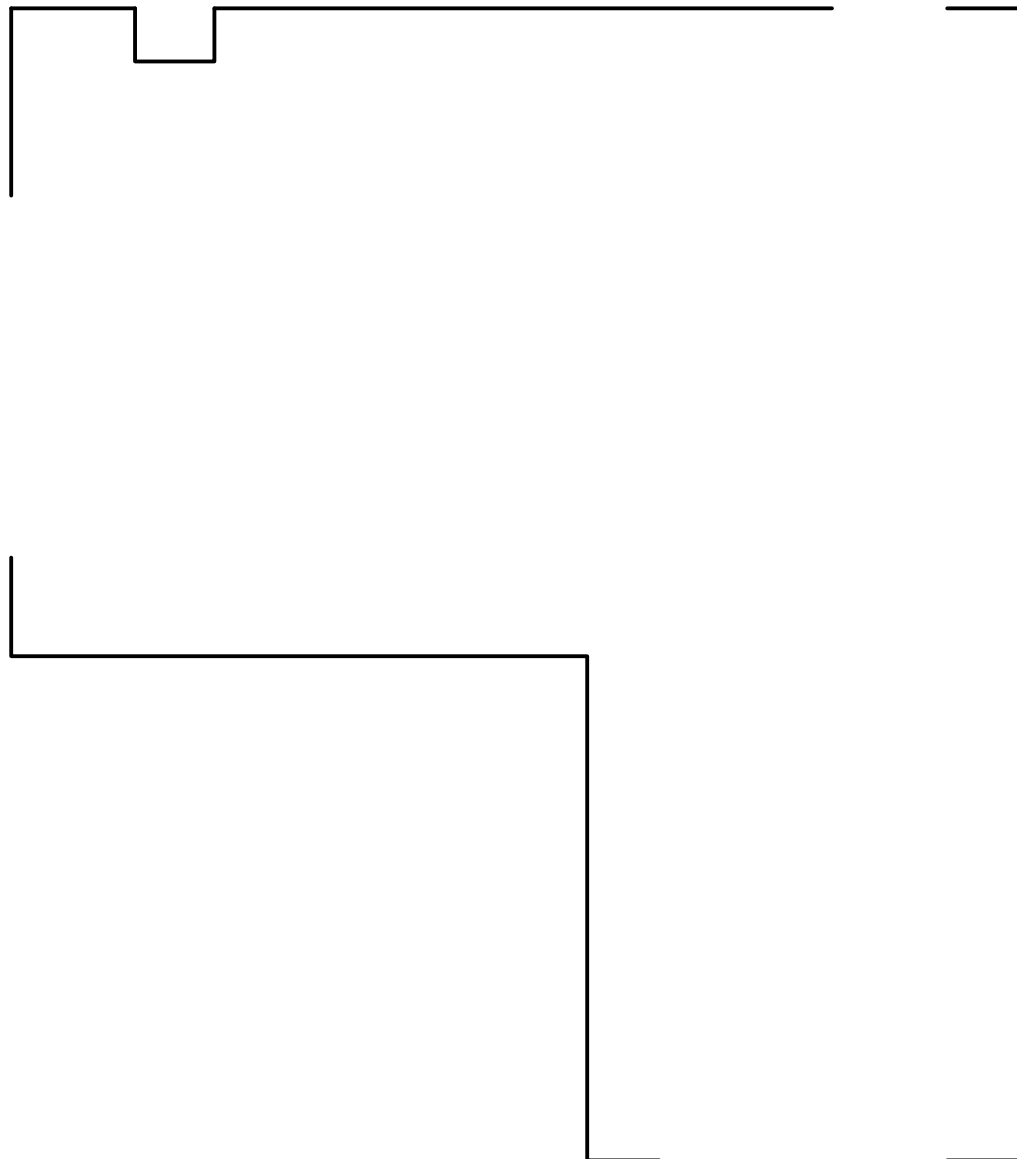
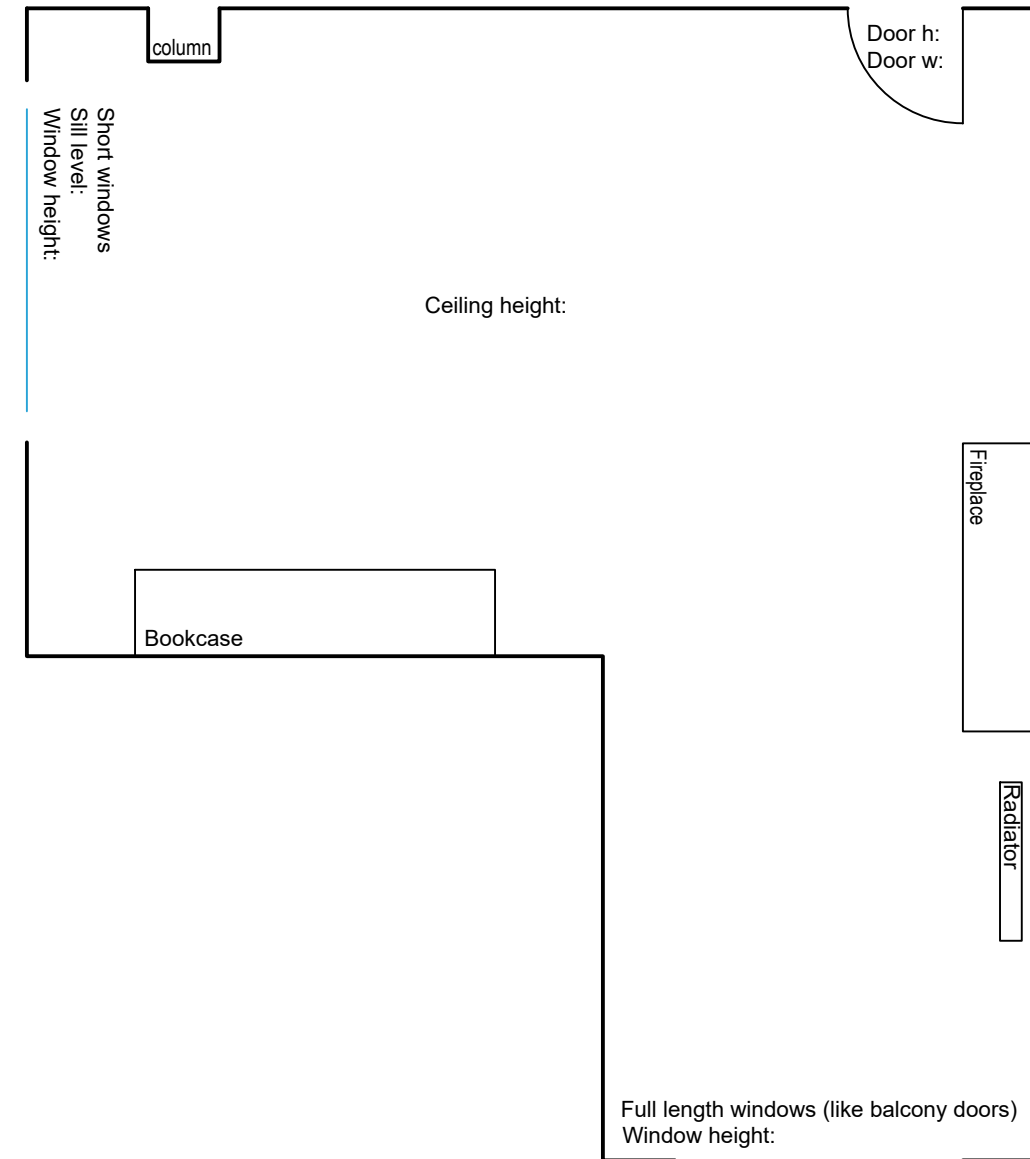


Good news! You don't need advanced drawing skills to map your room measurements - a simple bird's eye view sketch will do. If you can produce a well-proportioned drawing, that's even better! Let's get started.

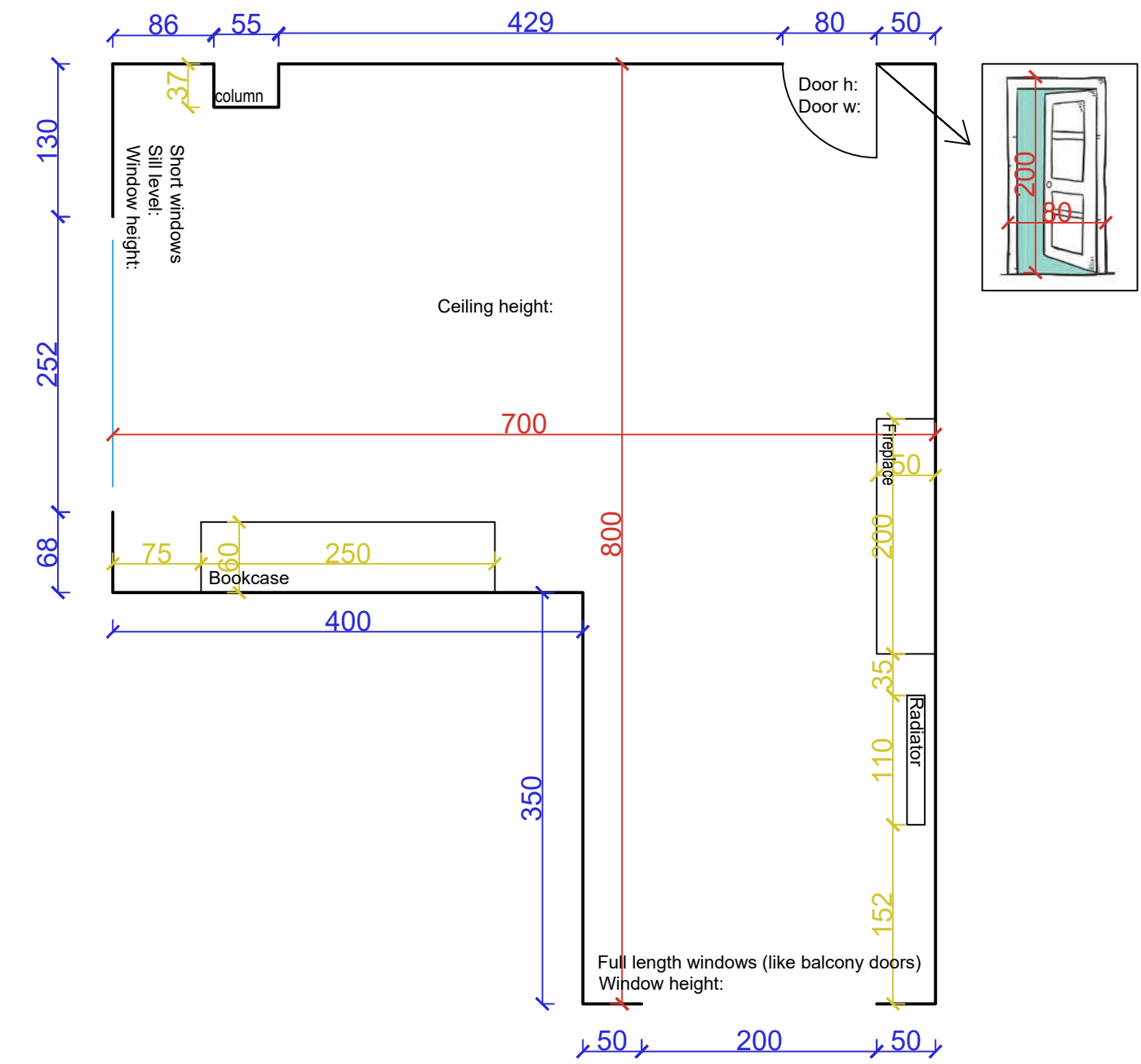
1. Sketch your walls, windows, and door openings from a top-down perspective.



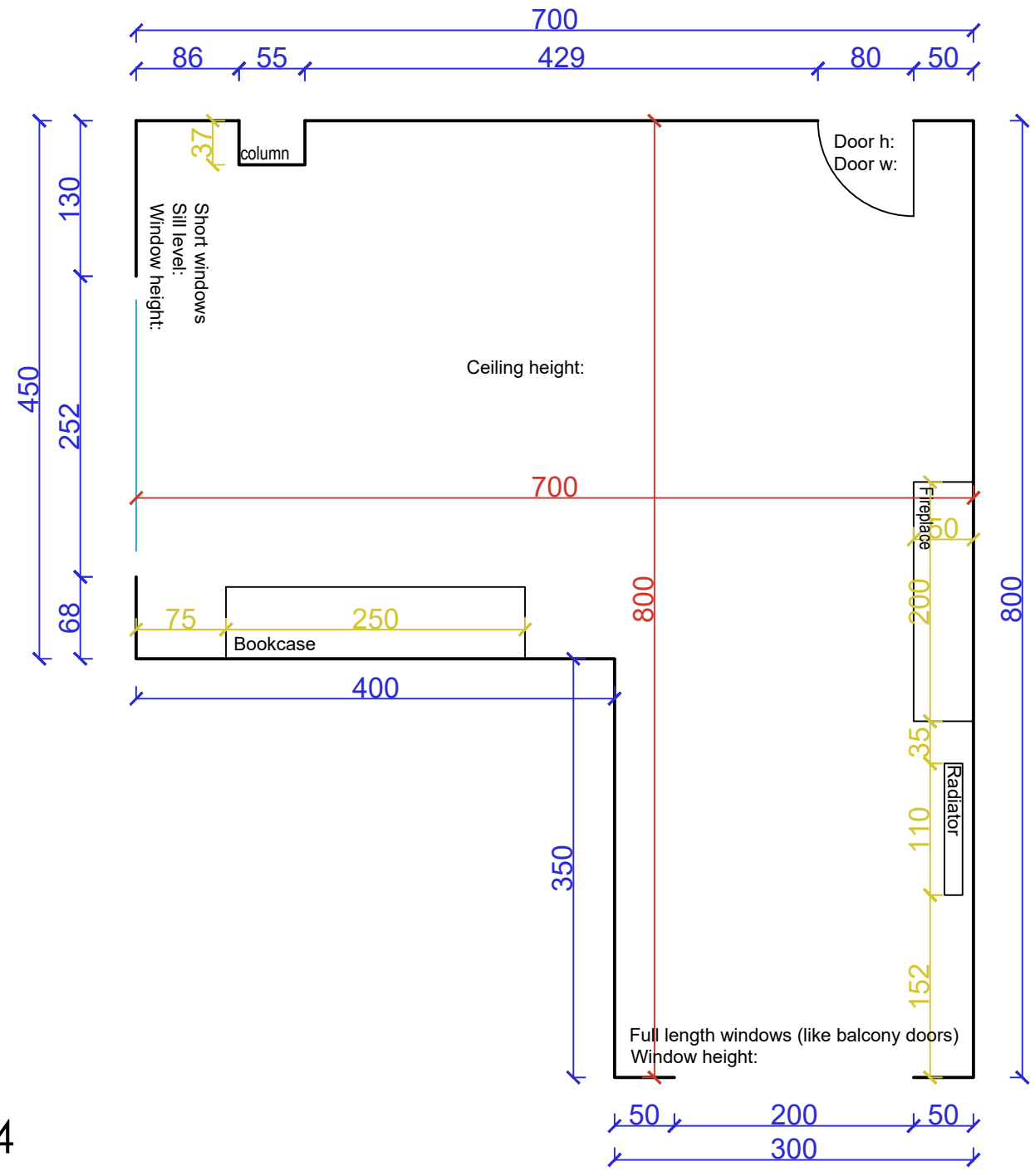
2. Mark the positions of windows and doors, noting their opening directions.
 3. Highlight the location of immovable and fixed items, such as fireplaces or built-in furniture.
 4. Identify the placements of radiators and air conditioning units.
- Mark any room features such as columns or niches that could impact the design.
5. Don't forget to note the ceiling height.



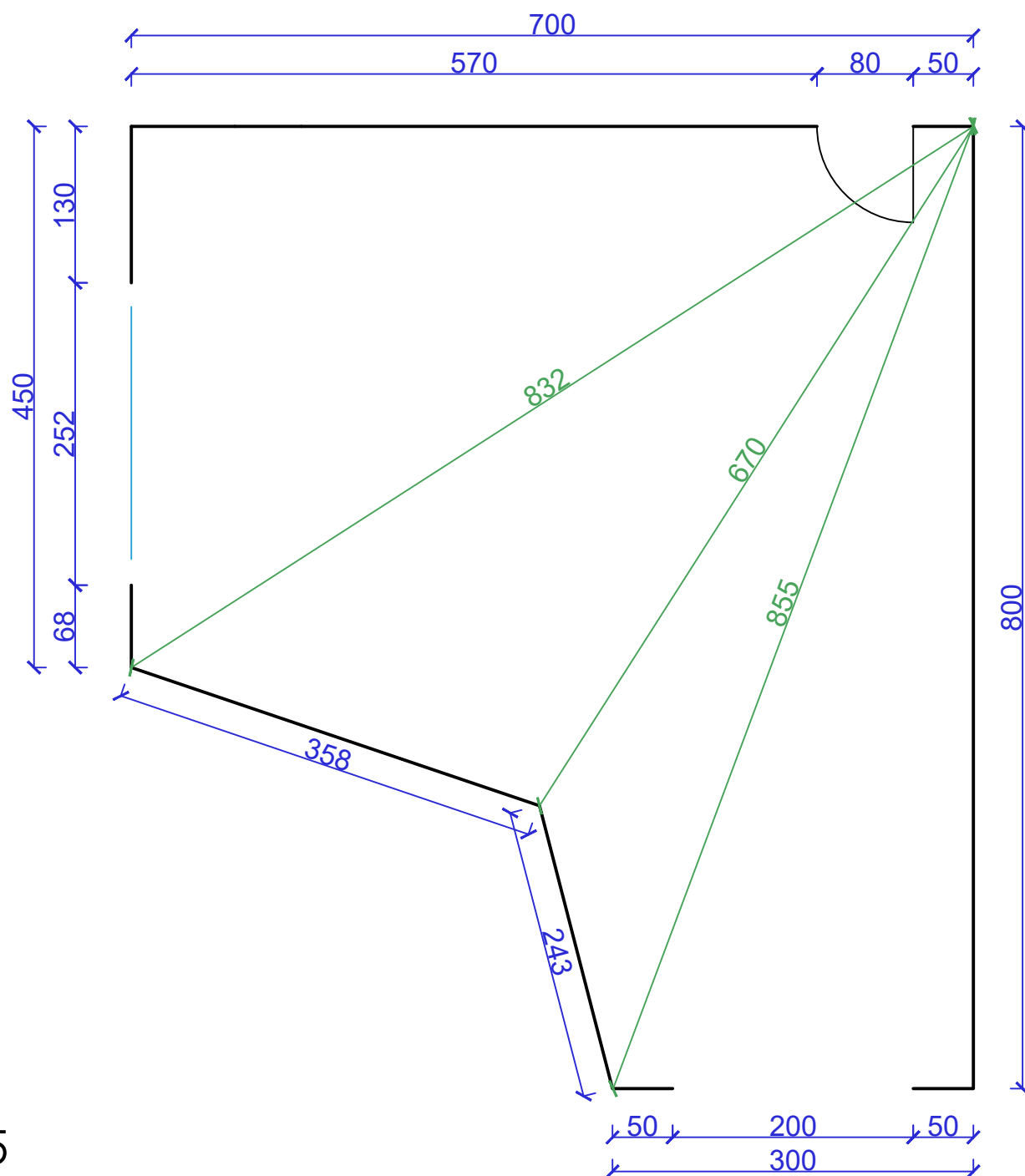
6. Start by measuring the length and width of the room (shown in red).
7. Next, measure each wall individually (shown in blue)
8. Make sure to include measurements for indentations and protrusions in the walls.
9. Measure the fixed objects, such as built-in bookshelves and fireplaces.
10. Measure the doors and windows from the outside edge of the frame.



11. To avoid mistakes, you may want to include a second dimension line to measure the walls in their entirety.



12. If your room has diagonal walls, follow the steps above, then lastly divide the room into triangles by drawing additional lines (indicated in green). Measure these additional lines and record the measurements. This will allow us to determine the angles of your diagonal walls accurately.



Measure all pieces of furniture and radiators in three dimensions - length, width, and height.



A: Width
B: Depth
C: Height

